

Daytona BY **CSC**
TRIKES

1999 - 2008

FLHT Series Harley-Davidson

**SHOCK SPRING
PRELOADER
Installation Instructions**

Revised 1 - 2015

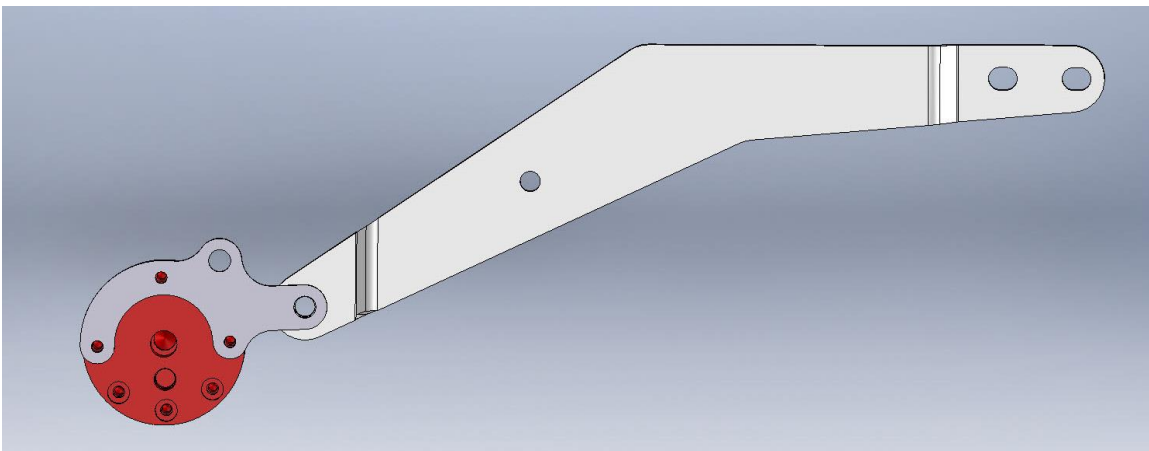
California Sidecar Parts & Technical Support
434.263.8866

Warnings and considerations:

- 1.Disclaimer** - These instructions assume a level of understanding of motorcycle repair and maintenance beyond that of a “beginner” and/or “novice” and California Sidecar cannot be liable for an installer’s failure to understand or follow these instructions as written. Likewise, California Sidecar cannot be responsible if any of the steps are omitted or shortcuts are taken, or parts other than those supplied by California Sidecar are used.
- 2.“WARNINGS”** are all printed in bold type and capitalized. They mean to use extreme care in a given step so as not to damage the part, motorcycle, and/or yourself.
- 3.Always** wear safety glasses when using hand and/or power tools.
- 4.**When working in and around the fuel system, **always** work in a well-ventilated area, free from sparks and open flames.
- 5.**All directional references to the “right side” and the “left side” are as you were seated on the motorcycle.
- 6.**All directional references to “forward” mean to the front of the motorcycle while “back” means the rear of the motorcycle unless otherwise stated.

Preloader Installation:

- 1. Install the Mounting Bracket onto the Remote Adjuster using the three 10-32 x 1 BHSCS.**
- 2. Remove 5/16-18 x 1 HHCS from the right front of the frame brace.**
- 3. Install the Preloader Mount in between the frame and the frame brace.**
- 4. Install 5/16-18 x 1 1/4 HHCS with Flat Washer into frame, Preloader Bracket, and then into the frame brace.**
- 5. Install 5/16-18 x 1 HHCS and Flat Washer removed in step 2 into the upper hole in frame and bracket.**
- 6. Install 5/16-18 Nyloc Nuts and Flat Washers onto the two HHCS and tighten.**



**From all of us at California Sidecar.
Enjoy the ride!**